



Beaufort County
Public Works
Stormwater Infrastructure
Project Summary

Project Summary: Hewlett Road

Activity: Routine/Preventive Maintenance

Narrative Description of Project:

Removed blockage from flowline and 345 L.F. of debris from workshelf.

Duration: 4/11/16 - 4/12/16

2016-617 / Hewlett Road	Labor Hours	Labor Cost	Equipment Cost	Material Cost	Contractor Cost	Indirect Labor	Total Cost
AUDIT / Audit Project	0.5	\$11.75	\$0.00	\$0.00	\$0.00	\$6.62	\$18.36
DEBREM / Debris Removal - Jobsite	55.0	\$1,171.05	\$101.79	\$32.77	\$0.00	\$734.50	\$2,040.11
HAUL / Hauling	10.0	\$222.70	\$79.90	\$33.98	\$0.00	\$144.20	\$480.78
ONJV / Onsite Job Visit	4.0	\$123.00	\$14.16	\$1.42	\$0.00	\$72.92	\$211.50
2016-617 / Hewlett Road Sub Total	69.5	\$1,528.50	\$195.85	\$68.17	\$0.00	\$958.23	\$2,750.74
Grand Total	69.5	\$1,528.50	\$195.85	\$68.17	\$0.00	\$958.23	\$2,750.74

Before



During



After



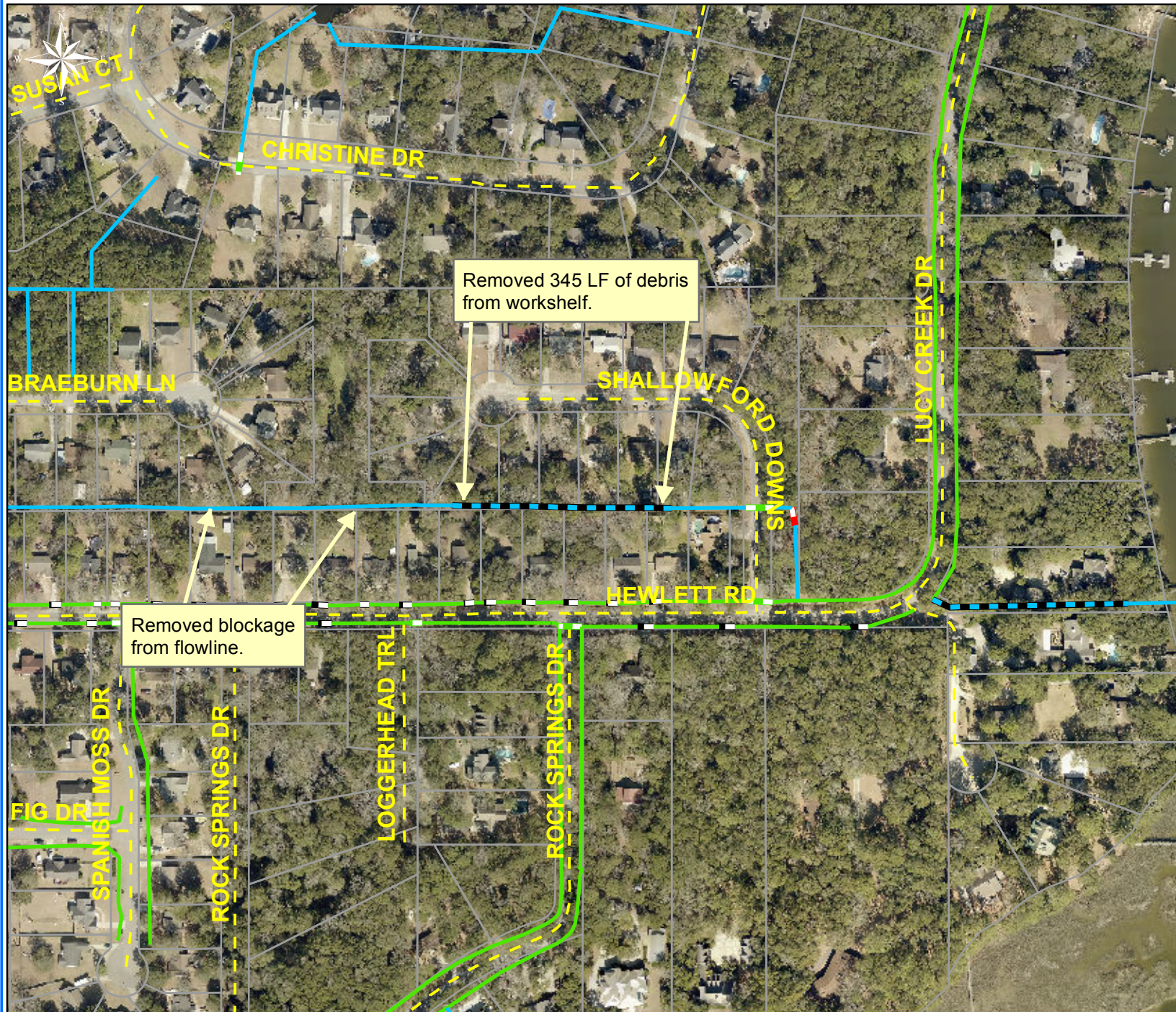
Project: Hewlett Road

Activity: Routine/
Preventive
Maintenance

Project #:
2016-617

Township/SW Dist:
Port Royal Island/7

Completed:
April 2016



Legend

Drainage Type

- Access Pipe
- Bleeder Pipe
- Channel Pipe
- Channel
- Stream
- Crossline Pipe
- Driveway Pipe
- Lateral
- Lateral Pipe
- River
- Road Pipe
- Roadside
- Roadside Pipe

0 60 120 240 360 480
Feet

1 inch = 250 feet

Prepared By: BC Stormwater Management Utility

Date Print: 05/12/16

File: C:\project summaries map\Hewlett Road_2016-617